

IDEX Version 3 The Cleaning System Setup



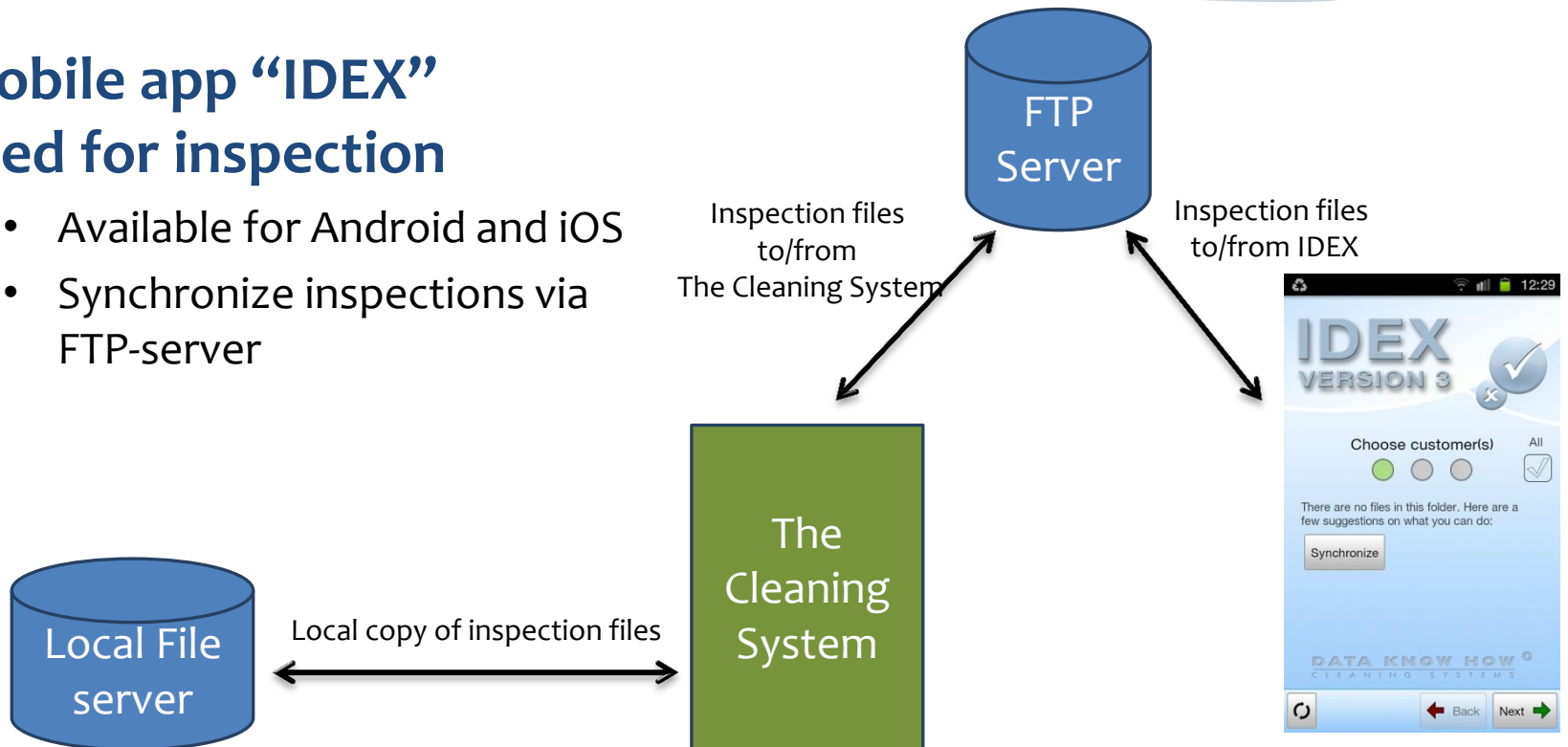
Cleaning Quality Control – Android / iOS Application

Aps Data-know-how

Main Concepts

Mobile app “IDEX” used for inspection

- Available for Android and iOS
- Synchronize inspections via FTP-server



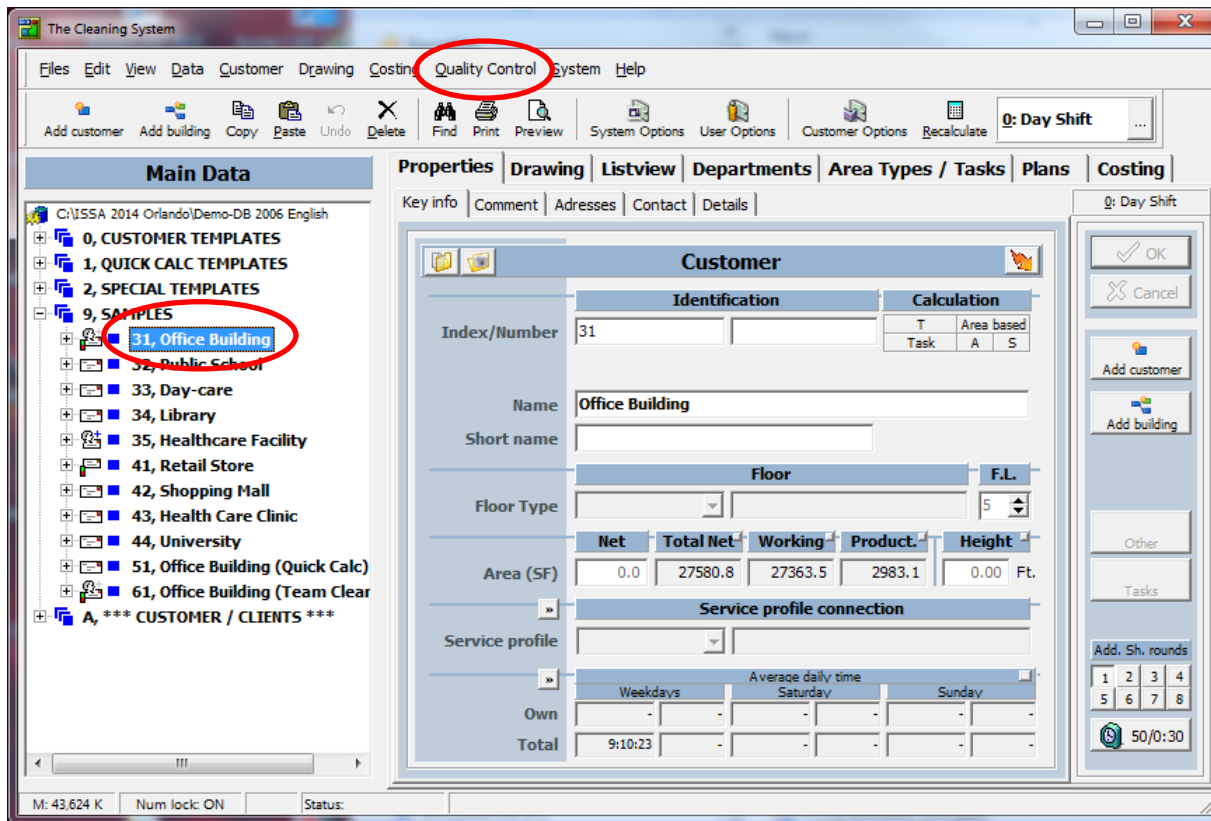
Who needs access ?

Make a list of all persons who needs access to the inspection files sent from **The Cleaning System**. Assign each person to a unique Local Synchronization Folder and a unique FTP Folder.

- **Local Synchronization Folders** should be located in a dedicated folder on a file server where all users of The Cleaning System have access, e.g. in "T:\The Cleaning System\IDEX Sync Folders"
- **FTP Folders** are located on your FTP server.

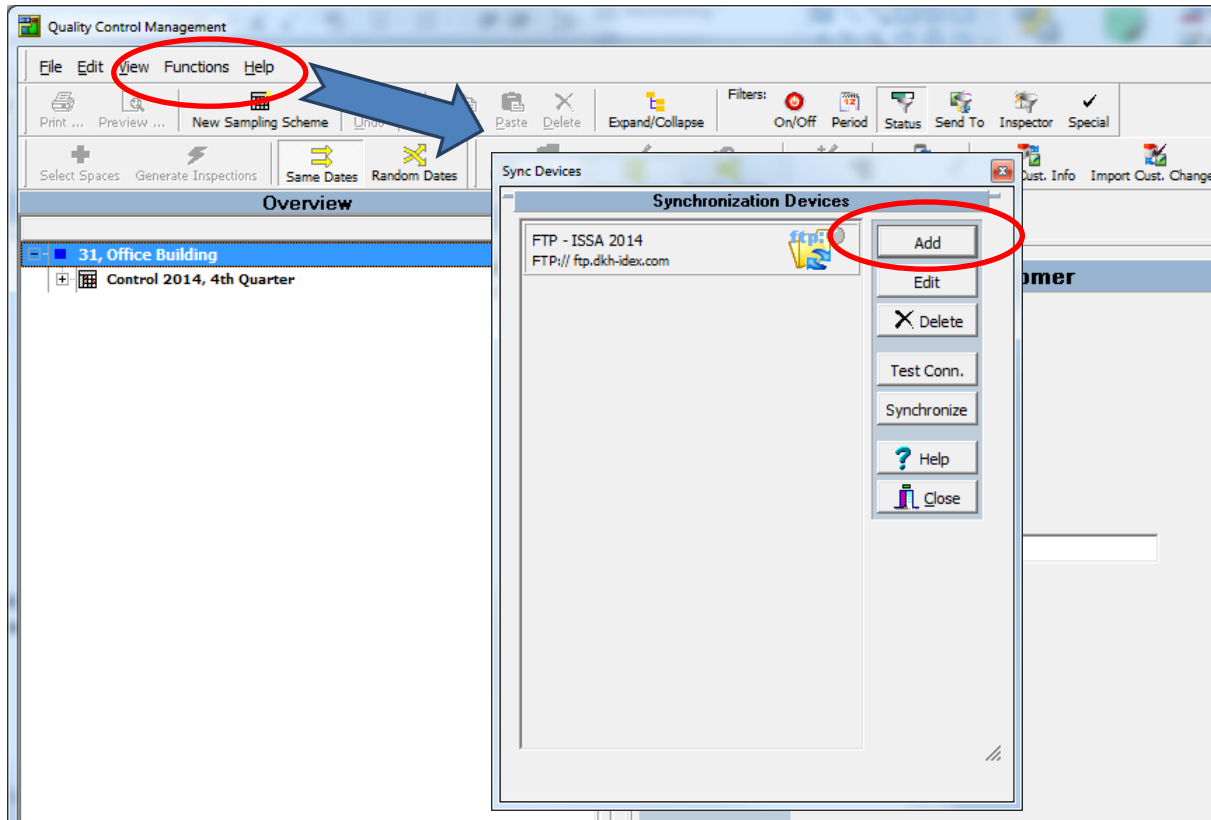
Person	Job	Device	Local folder	FTP folder
Peter	Supervisor	Tablet	Tableto2	Tableto2
John	Supervisor	Smartphone	Tableto3	Tableto3
Maria	Supervisor	Tablet	Tableto4	Tableto4
Alex	Consultant

Step 1: Open Quality Control Management window



- 1) Select "Customer"
- 2) Open menu: "Quality Control" > "Quality Control"

Step 2: Add new device (SmartPhone or Tablet)



- 1) Open menu: “Functions” > “Administrate Sync Folders”
- 2) Add new device (SmartPhone/Tablet) by pressing “Add”-button.

Step 3: Setup your new device

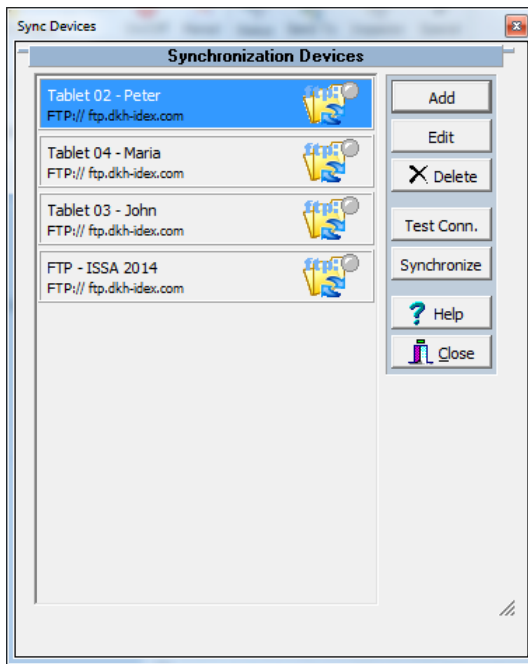
The screenshot shows the 'User Defined Sync Device' dialog box with the following fields and options:

- Display name:** Tablet 02 - Peter (annotated with a red '1')
- Device type:** (empty)
- Description:** Peter's Tablet
- Local Sync Folder Options:** Local Sync Folder: T:\The Cleaning System\IDEX Sync Folders\Tablet02 (annotated with a red '2'). A red circle highlights the '...' button next to the folder path.
- Optional FTP Settings:**
 - FTP Server:** ftp.dkh-idex.com (annotated with a red '3')
 - User name:** DK-DKH-001@dkh-idex.com
 - Password:** (masked with asterisks)
 - FTP Folder:** /Tablet02 (annotated with a red '4')
 - Automatic create folder, if it doesn't exist
 - Connect
 - Connected
 - Send/Receive
 - Valid connection
 - Valid folder
 - Status:** (empty)
 - Test connection:** (button, circled in red)
- EXTERNAL: External Sync Folder:** (empty)
- FTP Options:**
 - Download customer related images, if any, from FTP server.
 - When downloaded, delete it from FTP server.

- 1) Type in “Display Name”
- 2) Select Local Synchronization Folder (press the “...”-button)
- 3) Type in your FTP-account information (Server name, User name and Password)
- 4) Type in the name of the FTP synchronization folder (if the folder doesn't exist you'll have the option of creating a new folder after pressing the “Test Connection”-button)

Test your setup by pressing the “Test Connection”-button.

Add multiple devices



Repeat Step 2 and 3 for each new device you want to add to the system.

IMPORTANT

Remember each device must be connected to their own **Local Synchronization Folder** and to their own **FTP Folder** on your FTP account.

Setup on IDEX

